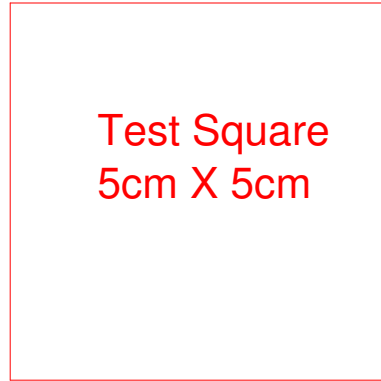
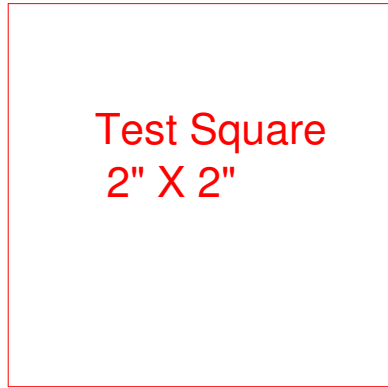


Printing Instructions Style 300 Size A2

1. Open the pattern file in Adobe Acrobat Reader. The file name will be the style number underscore and size, example A2_300.pdf
2. On one of the pages there is a 2 inch square and a 5cm square.



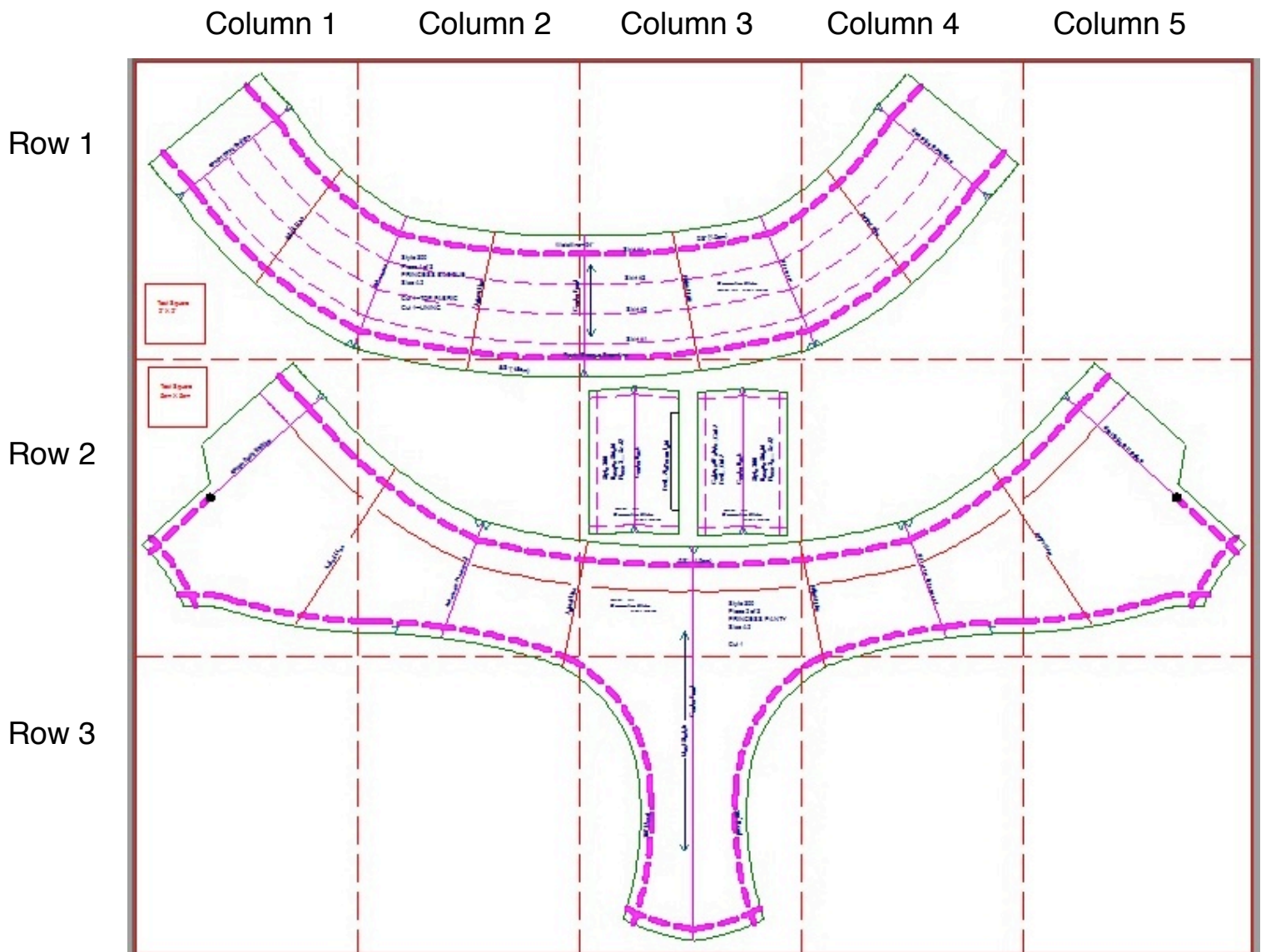
3. Print this page and measure the square. It must be 2 inches square or 5cm square for the pattern to be printed the right size.

If the square is not the right size, you will have to turn off any "Scale to Page" features on your printer.

The pattern has been developed to fit on standard letter or A4 size paper.

Dashed lines represent the single sheets of paper from your printer.

Lay out and tape together to get the full size pattern.



Taping the pattern together.

1. Print all the pattern pages. (Having checked the 2 inch square above first)
2. Your patterns will print with 1/4 pie-shaped registration marks in each corner. Overlap each page matching the pie wedges together to form a circle. Tape together. To aid in matching the pieces together there is column and row numbers at the bottom of each page. Your finished pattern will be one large piece of paper taped together with all the pieces on.
3. Cut out each pattern piece. Use extra tape when joining 2 or more pages to form a single pattern piece.

